

Wrights



170 Haycombe Drive
Bath BA2 1PP

Monthly Rental Of £1,280



Wrights Residential, 24 Fore Street , Trowbridge, BA14 8ER
Phone: 01225 755553, Email: enquiries@wrightsresidential.co.uk
www.wrightsresidential.co.uk

Two bedroom semi detached property

Double glazing

Conservatory

Available mid March

Gas central heating

On road parking

Double bedrooms

Unfurnished

Wrights Residential are delighted to bring to the market this spacious two bedroom semi detached property. The property is in excellent order throughout, with features including gas central heating, PVCu double glazing, private enclosed gardens and on road parking (non allocate). Available from mid March, unfurnished. Pets by negotiation.

Situation

The property is situated within an established residential area on the outskirts of Bath. Local shops and amenities are within easy reach and the property is also conveniently on the main bus route to the city centre.

The property comprises

Ground Floor

Porch

With PVCu double glazed front door and PVCu double glazed window to the front and side.

Entrance Hall

With wood effect vinyl flooring, double panel radiator, shelving unit and stairs to first floor with storage cupboard under.

Kitchen *9' 5" x 7' 11" (2.88m x 2.41m) max*

With ceramic tiled flooring, double panel radiator, a range of eye level and base units, rolled work tops, sink/drain, integrated oven, microwave, freestanding fridge/freezer, space for washing machine and tumble dryer, PVCu double glazed windows to the front and side and PVCu double glazed door opening into...

Conservatory *13' 1" x 6' 9" (3.99m x 2.05m)*

With wood laminate flooring and PVCu double glazed window to the side and rear.

Lounge *16' 1" x 11' 1" (4.90m x 3.37m)*

With double panel radiator, television point, telephone point, inset ceiling spotlights, feature fireplace and PVCu double glazed french doors leading to the garden.

First Floor

Landing

With loft hatch.

Bedroom 1 *12' 10" x 11' 1" (3.92m x 3.37m)*

With double panel radiator, linen cupboard and PVCu double glazed window to the rear.

Bedroom 2 *9' 5" x 10' 0" (2.87m x 3.06m)*

With double panel radiator, boiler cupboard and PVCu double glazed window to the side.

Bathroom *9' 3" x 7' 7" (2.82m x 2.30m) max*

With wood effect vinyl flooring, double panel radiator, white suite comprising bath with mains shower over, W.C, pedestal hand basin and obscured PVCu double glazed window to the front.

Externally

To the front

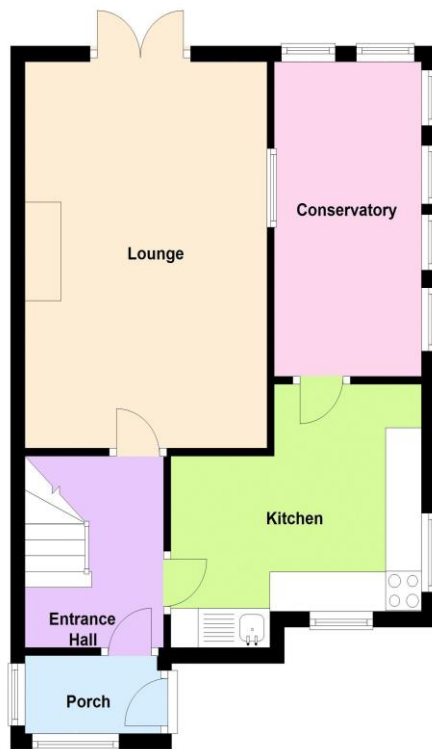
The property is set back from the road with a spacious area laid to lawn, enclosed by fencing and hedging and with a path to the front door.

To the rear and side

The generous enclosed garden comprises patio seating area and a spacious area laid to lawn with rotary washing line and garden shed.



Ground Floor



First Floor

